



Introduction to Artificial Intelligence (AI)

What AI is, how it is used in everyday life, and its benefits and limitations.



What is AI?

AI stands for **Artificial Intelligence** — computers performing tasks that usually require human thinking.

→ **Understanding Speech**
Voice assistants that respond to your words

→ **Recognizing Images**
Identifying faces or objects in photos

→ **Making Suggestions**
Recommending products or content

A Simple Way to Think About AI

Helpful Assistant

AI acts like a helpful assistant, ready to respond to your requests

Learns from Data

It learns from large amounts of information to improve over time

Finds Patterns

It recognizes patterns and makes predictions based on them

No Feelings

It does not have feelings, opinions, or true awareness

Where You Already See AI



Smartphones

Voice assistants & predictive text



Email

Spam filters sorting your inbox



Online Shopping

Personalized product recommendations



Streaming

Movie & music suggestions



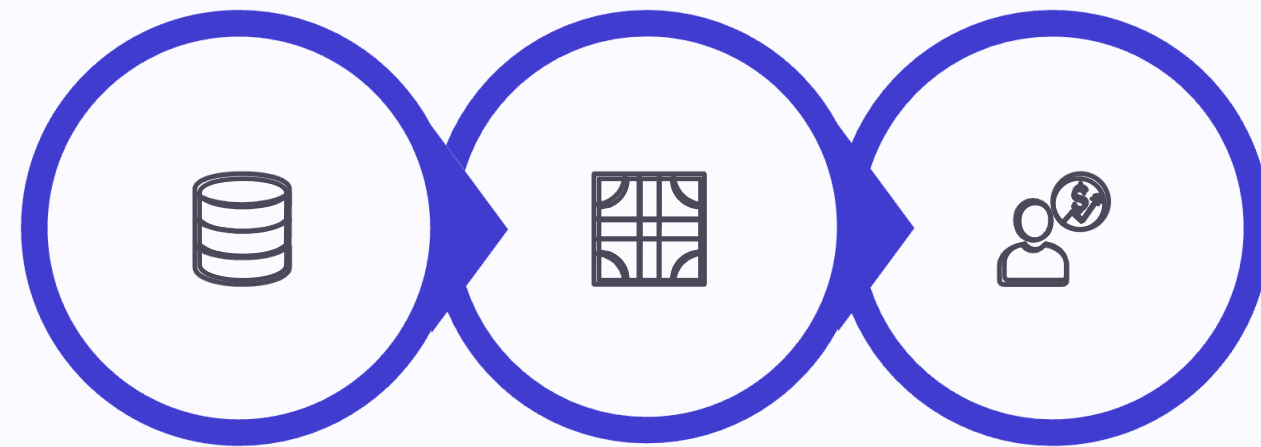
Navigation

Real-time traffic updates

How AI Learns

AI does not "understand" the way humans do. It makes decisions based on **probabilities** — finding what answer is most likely correct based on patterns in data.

📌 Think of it like a very fast pattern-matching machine, not a thinking mind.



Collect Large
amounts of
Data

Recognize
Patterns

Make
Predictions

Machine Learning & Deep Learning



Machine Learning

Systems learn from **examples** rather than being explicitly programmed. Used for spam detection and product recommendations.



Deep Learning

A more advanced form using **layered models inspired by the brain**. Excels at images, speech, and language.

Benefits of AI

Saves Time

Automates repetitive tasks so you can focus on what matters

Accessibility

Voice-to-text and screen readers help people with disabilities

Recommendations

Suggests relevant content, products, and information

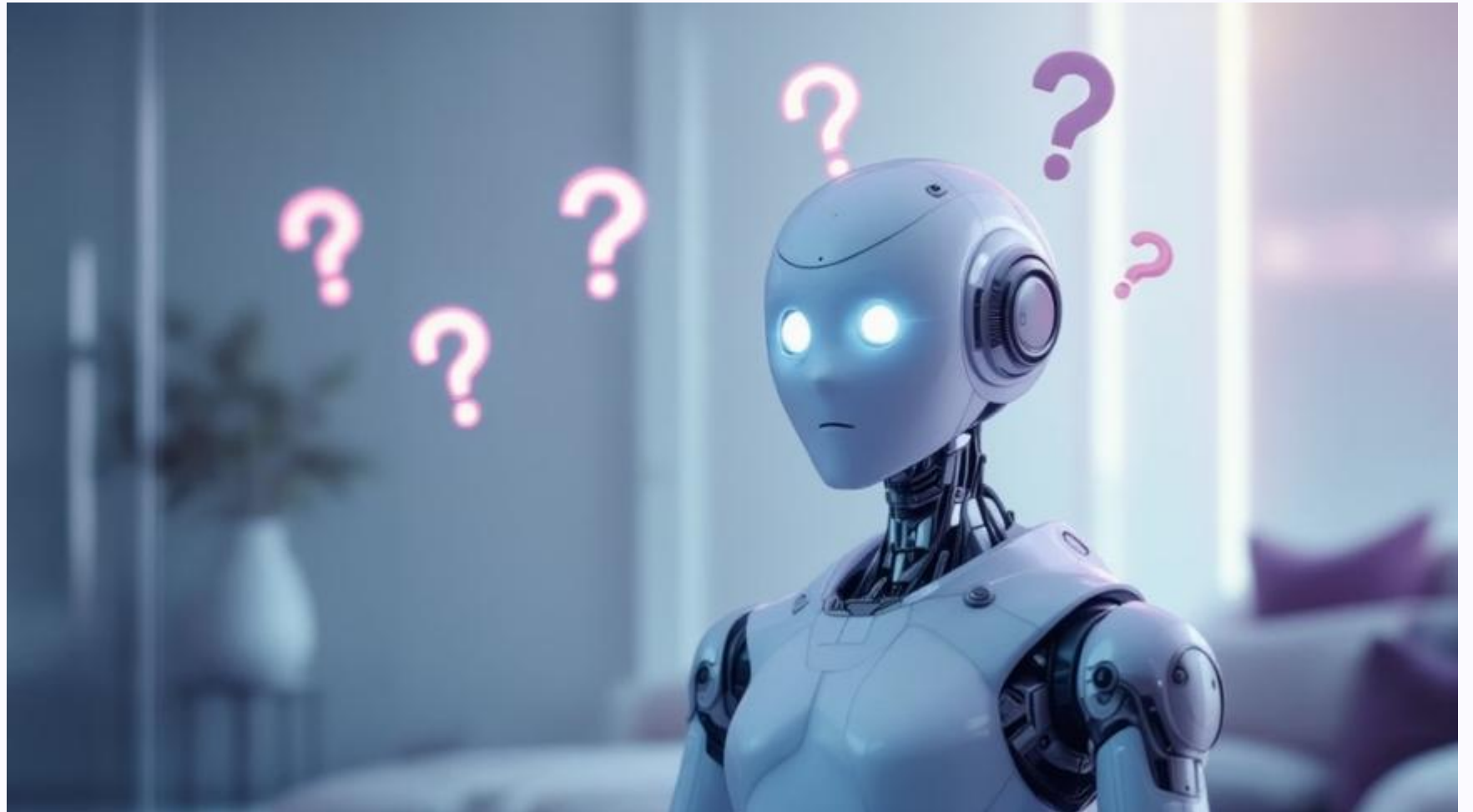
Healthcare & Safety

Supports medical diagnostics and safety monitoring systems



What Are AI Hallucinations?

Sometimes AI generates **incorrect or made-up information** — this is called an **"AI hallucination."** The AI may sound confident even when it is wrong.



✘ Incorrect Facts

Presented as true

🔄 Misleading Info

Plausible but wrong

👤 Invented Sources

Fake citations or details

Why Hallucinations Happen & How to Stay Safe

Why It Happens

AI predicts responses based on **patterns, not true understanding**. It fills in gaps when information is incomplete, designed to sound fluent — not always accurate.






How to Stay Safe

- Double-check important info from **trusted sources**
- Be cautious with **medical, legal, or financial** AI advice
- Use AI as a **guide**, not the final authority

Comparing Popular AI Tools

Market share of leading conversational AI platforms (2026 estimates).

Tool	Share	Key Highlights
ChatGPT	~68-80%	Dominant leader; general-purpose; massive user base
Perplexity AI	~8-11%	Real-time web citations; best for research & factual queries
Google Gemini	~4-18%	Deep Google integration; strong multimodal; fast-growing
MS Copilot	~3-5%	Embedded in Windows & Office; productivity focused
Claude	~1%	Safety, long-context reasoning, enterprise applications
DeepSeek	<1%	Strong in China; cost-efficient; rapidly emerging

-  **General Use**
ChatGPT
-  **Research**
Perplexity
-  **Google Users**
Gemini
-  **Productivity**
Copilot
-  **Safety**
Claude

Summary

- AI is a tool that assists with everyday tasks
- Machine learning and deep learning power many AI systems
- AI is widely used in daily life
- AI can make mistakes, including hallucinations
- Human judgment remains important
- Do not provide private information, your data becomes training material

Example & More Reading

- Automatic pill dispensers Australia with Bluetooth include images
 - CHATGPT
 - Amazon
- With CHATGPT List popular AI system by percentage and refine the query
 - what are the common AI applications by popularity
 - in table format
 - for conversational AI
 - showing use percentage
 - tabulate the common Conversational AI by percent popularity and present in a table with the highlights of each application
 - <https://beconnected.esafety.gov.au/topic-library/articles-and-tips/what-is-ai>