



Be Connected
Every Australian online.

Presentation by Peter Baker, our IT Guru

IT Topic: Need for better IT equipment.

When is it Time to Replace Your IT Equipment?

This is a senior Member's question.

W 24 June 2026
APSS Victoria Branch



PS Superannuants

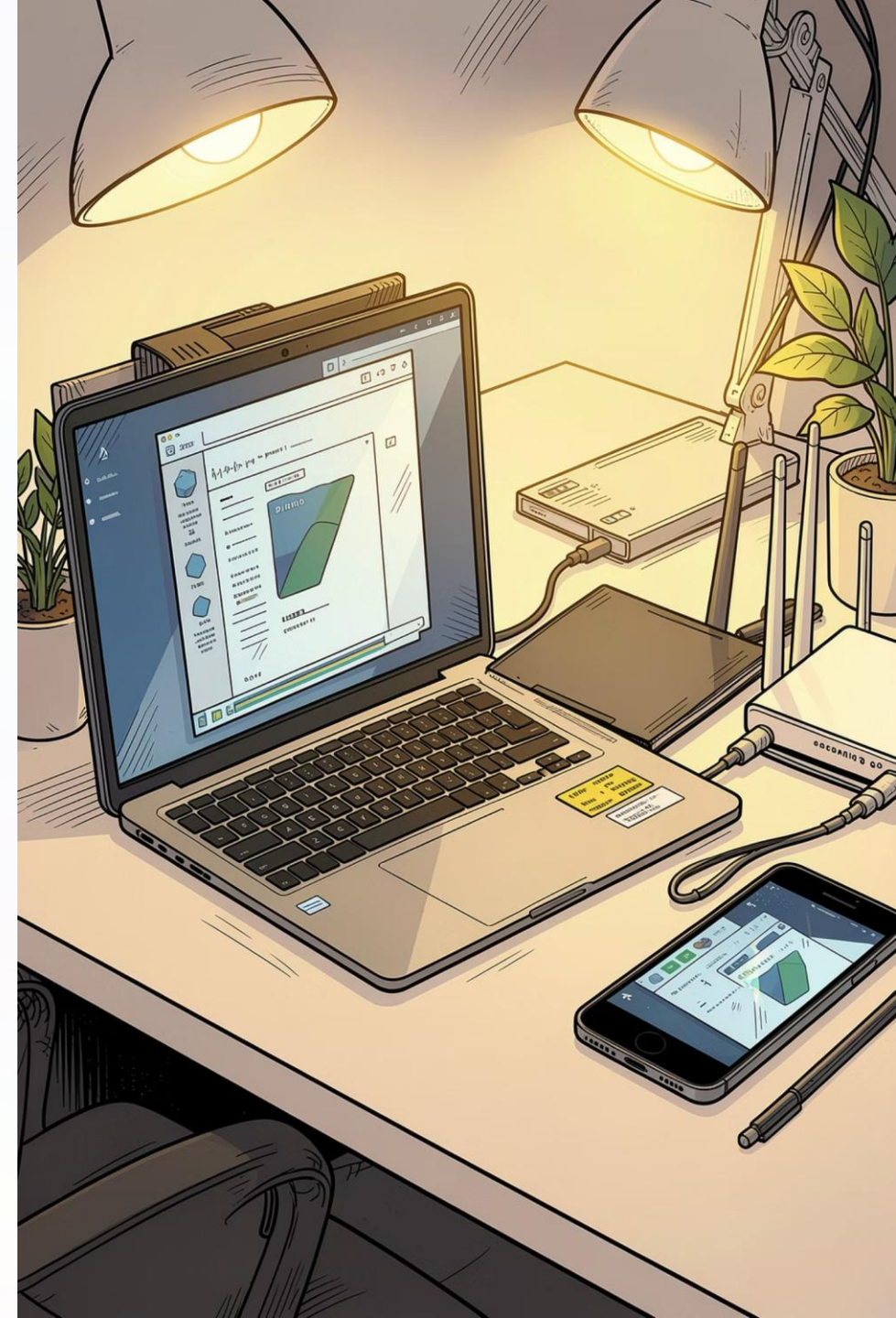
The Association of Public Sector Superannuants Inc.
Formerly SA Superannuants
Established 1927



IT DECISION GUIDE

When Is It Time to Replace Your IT Equipment?

Devices age on two fronts — software support fades while hardware loses capacity. Knowing when to upgrade keeps you secure, productive, and connected. This guide walks through the key signals and practical mitigations.



Security Updates - Software Support Ends — Risks Rise

⚠️ Once security updates stop, your device becomes an attractive target. Unpatched vulnerabilities & exploits accumulate indefinitely.

Windows 10 currently sits in a one-year free ESU extension through October 2026 — but the clock is ticking for organizations and home users alike.

1

Android Typically 2-4 years
varies by manufacturer and price tier.

2

iPhone (iOS) 5–7 years
among the longest support windows in mobile.

3

Windows 10 ESU October 26
Plan migrations to Windows 11 now
or extra security, but risk will exist.

Mitigation Strategies

Extra security software, but some risk remains
Limit sensitive software -banking apps to modern hardware.

Hardware Obsolescence & Battery Aging

Batteries degrade by year three to five.

Expanding Software

New features and apps want RAM, storage, or processor. This drives upgrades.

Power/General User?

Email Browse videos or complex games, video processing, or creative tools.

Battery Economics

A \$150 battery may buy a year or two, but other components also age, replacement updates everything.



Mobile Networks & Emergency Risks

3G Decommissioned
Older 3G devices fail in
4G & 5G networks.

Emergency Calls at Risk
Some 3G phones were
blocked as 000 failed

Satellite Connectivity
On some phones a
bush safety upgrade



Networks reuse legacy radio bands. If your phone uses legacy frequencies, core functionality including emergency services may silently fail.

AI, Routers & Modems — The Hidden Upgrade Triggers

AI Hardware: Don't Overspend

For most users, AI runs in the cloud — not on the device. Personal hardware acceleration isn't critical for everyday tasks. Specialists and companies will want on-device/site processing for privacy.

Router Speed Limits

Speed rose
1,000 times in
25 years.

From no video
to Netflix.

Unpatchable Flaws

Device flaws —
unfixable
backdoors

AI Privacy Learn
Load
medical
records to
AI?

Power over
Ethernet (PoE)
one cable for
network &
power
e.g. Camera

How to Assess Your Own Devices

Performance issues are often visible — apps crash, load times creep up, tasks that used to be instant now lag. A factory reset, install only essential apps, can extend life.



Beware well-meaning advice. A teenager might insist you need TikTok, or push a third-party messaging app over your phone's app- Will it help you?

Security failures are hard to spot. The longer since a device's last security update, the higher your exposure. Find EoL on manufacturer sites

Thank You

Peter Baker

W 24 June 2026
APSS Victoria Branch



PS Superannuants

The Association of Public Sector Superannuants Inc.
Formerly SA Superannuants
Established 1927



Your suggestions for future presentations

Membership questions

Website viewing

Your questions

W 24 June 2026
APSS Victoria Branch



PS Superannuants

The Association of Public Sector Superannuants Inc.
Formerly SA Superannuants
Established 1927

